



**Come See All That's New!**

*Completley Updated Interiors  
with Quartz Countertops,  
Stainless Steel Appliances,  
Plank-Style Flooring,  
New Carpets and Much More!  
Rents Starting at \$970*



## Special Features and Amenities

- **Newly Updated!** Studio, One and Two-Bedroom Apartment Homes
- Fully-Equipped Kitchens Feature New Stainless Steel Appliances, Plank-Style Flooring and Quartz Countertops
- Wash/Dryer Included in Every Apartment
- Private Patio or Balcony (select plans)
- Garage Parking
- Central Elevator
- Community Clubhouse Featuring Billiards, Video Lounge and Business Center
- Fitness Center
- Package Receiving Service
- Convenient Location Close to Shopping, Dining and Public Transportation

Individual apartments vary. Some features may not be available in all plans. See leasing staff for details.



3025 NE 137th Street  
Seattle, WA 98125

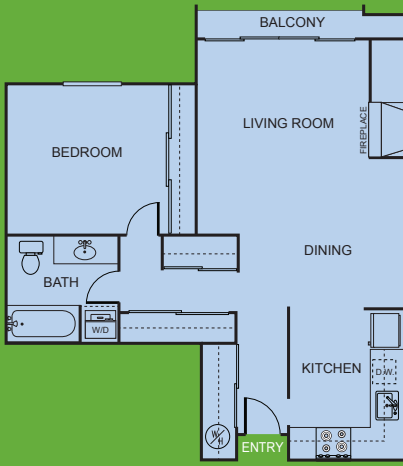
**Phone: 206-367-0369**

**www.park3025.com**



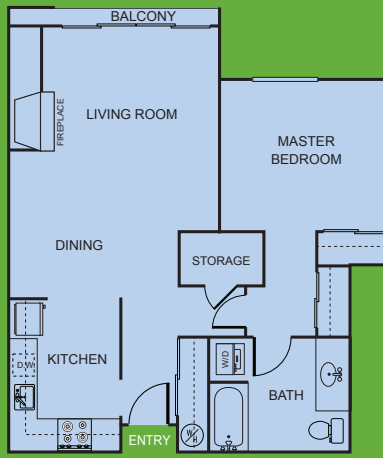
**CONAM**® Have a Nice Place®  
www.ConAm.com

**Nice place to live • Nice place to play • Nice place to call home!**



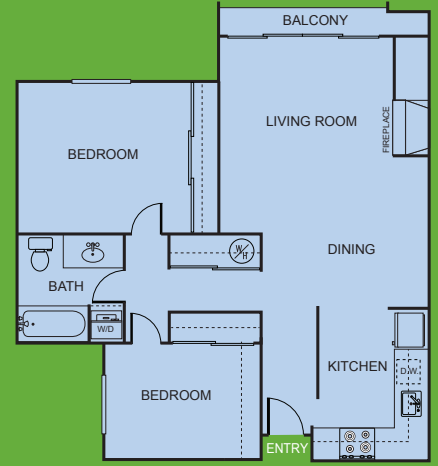
**Cumberland**

One Bedroom • One Bath  
850 sq. ft.



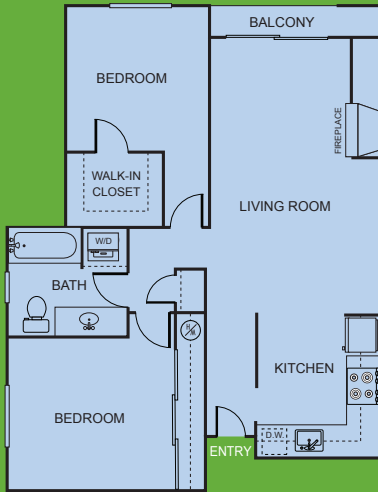
**Berkshire**

One Bedroom • One Bath  
900 sq. ft.



**Hampton**

Two Bedrooms • One Bath  
950 sq. ft.



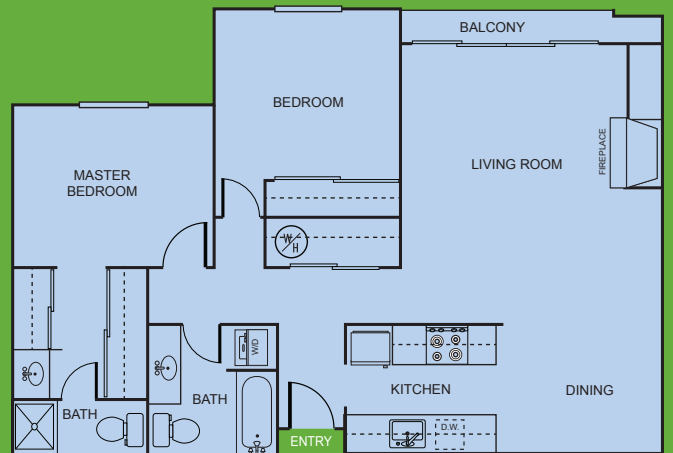
**Sussex**

Two Bedrooms • One Bath  
1,000 sq. ft.



**Windsor**

Two Bedrooms • One and One Half Baths  
1,100 sq. ft.



**Buckingham**

Two Bedrooms • Two Baths  
1,100 sq. ft.

**Park 3025 Apartments**

3025 NE 137th Street • Seattle, WA 98125

Phone: 206-367-0369

[www.park3025.com](http://www.park3025.com)